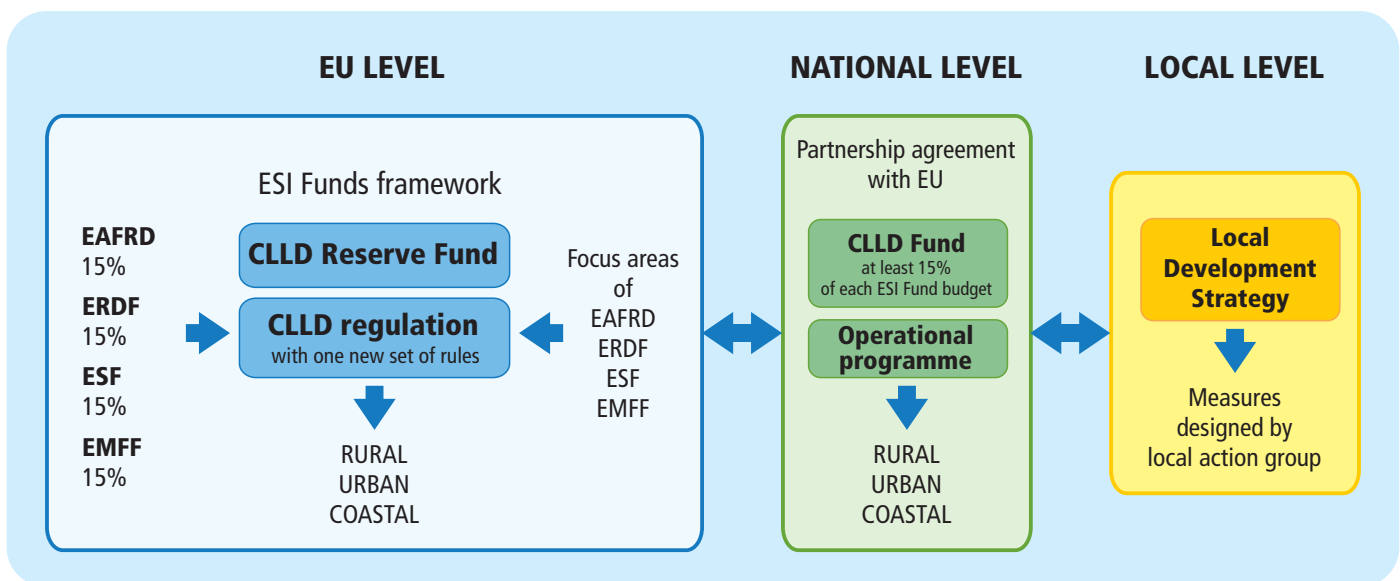


# Position of European LEADER Association for Rural Development Renewing LEADER/CLLD for 2021-2027 programming period

Approved by ELARD General Assembly on 23 November 2017  
and directed to further negotiations with European institutions and Member States.

European LEADER Association for Rural Development according to the **Tartu declaration on LEADER/CLLD implementation for programming period 2021-2027** and **Exploratory opinion on CLLD for 2021-2027** developed by European Economic and Social Committee proposes following LEADER/CLLD implementation model for 2021-2027 programming period:



## MESSAGES:

1. CLLD multi-funds implementation has to be mandatory **in all Member States in all types of territories: rural, urban and coastal.**
2. In order to achieve better cohesion of territories and different funds, we urge the European Commission to explore and analyse in depth opportunities to create a **Reserve Fund for CLLD** at EU level. Irrespective of this, the European Commission will have to ensure that all Member States have a **national CLLD Fund with contributions from all 4 ESI Funds** (EAFRD, ERDF, ESF and EMFF).
3. CLLD as reinforced LEADER method gives Member States unique possibility to develop their territories in a more inclusive, sustainable and integrative way. In order to achieve greater impact, enough financial means have to be foreseen for CLLD for the period 2021-2027. To do so, we urge the European Commission to set up a requirement for Member States to allocate **at least 15% for the CLLD Fund** from each **ESI Fund budget**, which must be supported by **sufficient national resources**. CLLD implementation in urban areas should not in any way harm or diminish CLLD implementation and budget in rural and coastal areas.
4. To reach to the remarkable simplification, **CLLD regulation** has to be worked out at EU level with **one set of rules**. Implementation at national level has to work under **national CLLD operational programme**, which will be coordinated by **one Managing Authority**.
5. Local Development Strategies will be implemented by measures designed **by local action groups at local level.**

## This proposed implementation model takes also into account:

Cork 2.0 declaration and its' action plan, European Countryside Movement Rural Agenda, European Rural Manifesto and Venhorst declaration, analysis of surveys and collected case studies in the field of LEADER/CLLD conducted by the European LEADER Association for Rural Development and the European Network for Rural Development in 2016-2017.